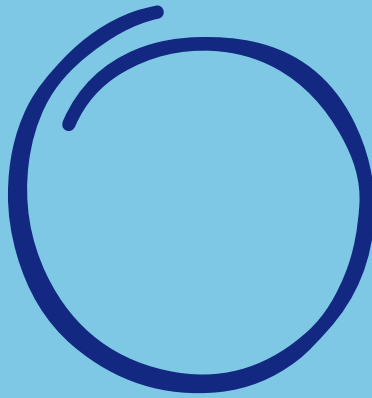




DEPLOY



Insta Slab

User Guide

water storage has never been easier

Content

1. Safety Warnings	3
2. Get To Know The Insta-Slab	4
3. Maintenance	6
4. Troubleshooting Guide	7

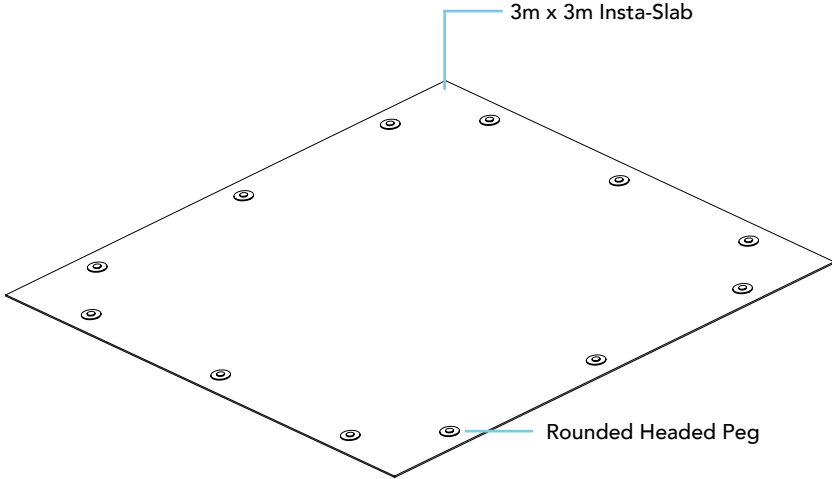
Safety Warnings

This guide is intended to help you be more comfortable whilst using this product. Failure to follow the instructions for proper set up, use, and care for your insta-slab can increase the risk of property damage or personal injury.

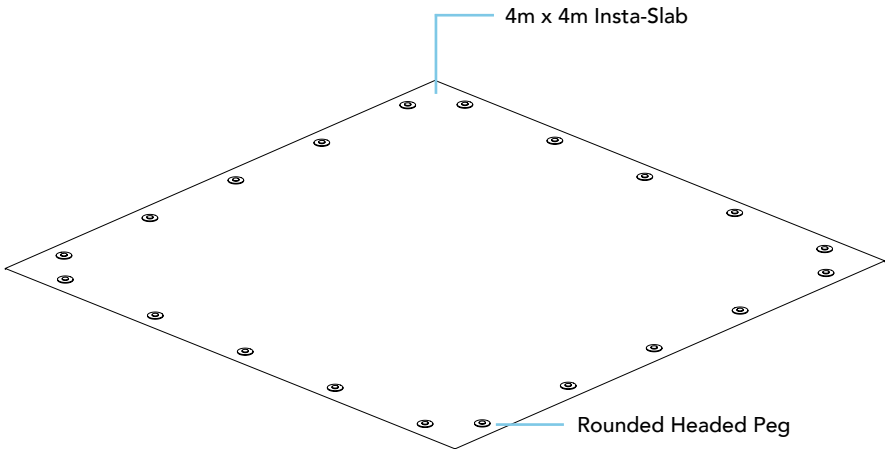
1. It is recommended to carry out periodic inspection of in the first weeks after installation.
2. Keep the product and all its accessories out of the reach of small children.
3. Ensure that the surrounding area is clear of any sharp objects that may damage the Insta-Slab.
4. Insta-Slab can be very slippery after raining or snowing. Always be caution when walking or working on a wet surface, and consider using non-slip shoes or other safety equipment.
5. Use only attachments/accessories specified by DEPLOY™.
6. We do **NOT** recommend moving the product from its original installation location.
7. Do **NOT** cut the Insta-Slab, it may damage the strength of the Insta-Slab.
8. In humid environments, and especially in water management applications, the surface of Insta-Slab provides a favourable base for moss growth. This is not harmful to the material and helps it blend in with the surrounding natural environment.
9. We do **NOT** take responsibility for any damage, injury, or loss resulting from improper use of the product.
10. In case of emergency, please contact DEPLOY™ technical support via +(44) 345 548 3375.

Get To Know The Insta-Slab

3m x 3m Insta-Slab



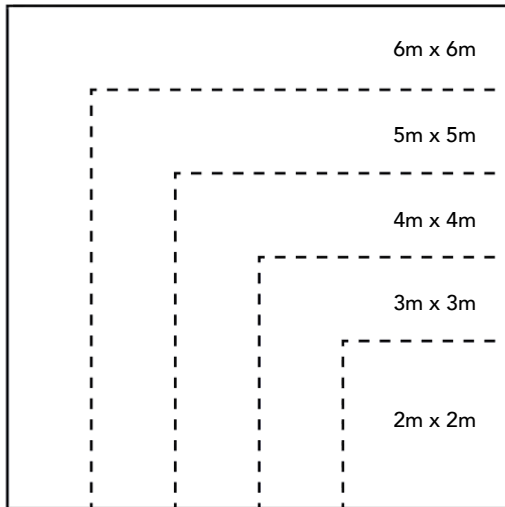
4m x 4m Insta-Slab



Get To Know The Insta-Slab

Insta-Slab Available Sizes

The Insta-Slab is available in 5 standard sizes - illustrated below, as well as custom sizing on request. Each Insta-Slab comes with round headed pegs as standard. For any issues experienced contact DEPLOY™ technical support via +(44) 345 548 3375.



Maintenance

Insta-Slab Cleaning Guide

Option 1: Manual Excavation (Brushing)

A plastic yard brush can be used to loosen dirt and sweep debris from the Insta-Slab surface.

Option 2: Assisted Excavation (Pressure Washing)

Pressure washing the top surface fibres of Insta-Slab will return the material to a bright white finish. Use a fixed (not oscillating) nozzle at least 150mm from the surface and move continuously in a sweeping pattern. Do not focus the jet in a fixed position or spray any closer than 75mm from the surface of the Insta-Slab.

Troubleshooting Guide

If any issues are experienced during installation follow the below solutions, or contact DEPLOY™ technical support via +(44) 345 548 3375. It is essential to address any issues promptly to ensure that the Insta-Slab is safe and functional.

Why Is The Insta-Slab Moving?

- The most common cause of this issue is due to the rounded headed pegs position, check if all the rounded headed pegs are locate and insert through the Insta-Slab eyelets.

At DEPLOY we're committed to sustainability.

That's why our water tanks are:

97% lighter

Require **75%** less water

And are **84%** faster to install

...than a traditional concrete water tank.

Contact us

(+44) 345 548 3375
info@deploytechltd.com
deploytechltd.com

Find us

Deploy Tech Ltd.
Cowbridge Road, Talbot Green
Pontyclun, Wales
CF72 8HL

Imperial College
London



RCA

